

What is an...



ECRIN??

E.C.R.I.N



September
is
National Preparedness
Month

Evacuating

County

Residents

In

Need

E.C.R.I.N...



- is a ***Community Outreach*** service to assist ***Elected Officials*** and ***Emergency Responders*** in our Boroughs, Townships, and the City
- is a ***Community Outreach*** service to provide our ***Residents*** with an effective and efficient means of assistance during an evacuation or other emergency
- is a ***Voluntary*** service – ***Elected Officials*** determine if they will participate, and ***Community Residents*** who participate do so by providing completed, signed E.C.R.I.N. forms

E.C.R.I.N...



- as a ***Community Outreach*** service to ***Emergency Responders***
 - State law* requires ***Elected Officials*** in our municipalities to have an evacuation plan for residents** with special situations that would require assistance from ***Responders***
- * Title 35 Health and Safety of Emergency Services Code
- ** Group living arrangements by law must have their own plans

E.C.R.I.N...



- as a ***Community Outreach*** service to ***Emergency Responders (continued)***
 - Some ***responders*** currently have information for residents on paper files, file cards, and/or computer files
 - Different ***responders*** within the same municipality have different information
 - ***Responders*** face challenges in identifying individuals with the information they need
 - There is greater risk for the safety of both the residents and the ***responders*** when ***responders*** operate with no or limited information
 - Prior ***awareness*** is essential in order to conduct pre-planning and in order to ***respond quickly***

E.C.R.I.N...



- as a ***Community Outreach*** service to ***Residents***
 - County ***Residents*** should have a plan for sheltering-in-place, and for an evacuation
 - Many ***Residents*** with special needs have families or friends who would assist them with that plan

E.C.R.I.N...



- as a ***Community Outreach*** service to ***Residents***
(continued)
 - **E.C.R.I.N. is a resource for residents with special needs who have no reliable source of assistance**
 - One individual who saw a demonstration of E.C.R.I.N. noted that just as individuals wear Medical Alert Bracelets to protect themselves, they would logically sign up for E.C.R.I.N. to protect themselves

E.C.R.I.N...



- as a ***Community Outreach*** service to ***Residents*** (continued)
 - Situations where a resident could benefit from E.C.R.I.N. beyond an evacuation include:
 - Fire, at their residence or in a neighbor's home
 - A police incident in the neighborhood
 - A hazardous chemical is released in a nearby area

E.C.R.I.N...



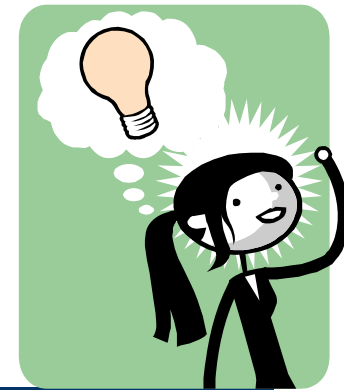
- is a tool for ***Emergency Responders*** so they can be ***aware*** and be ***prepared***

18%

- This percentage* represents the number of residents in any city, town, or borough who will need the assistance of ***Emergency Responders***

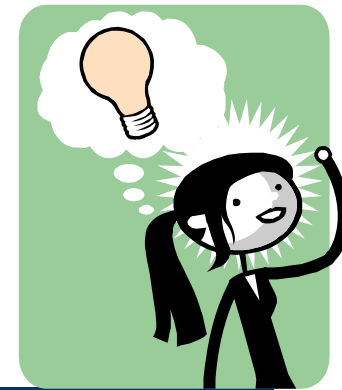
***Source: Disaster Preparedness Training – Identifying and Assisting Persons with Unique Needs During Emergencies**

What else is E.C.R.I.N?



- The E.C.R.I.N. tool is a package of tangible items as well as support services that will be made available to municipalities at no cost

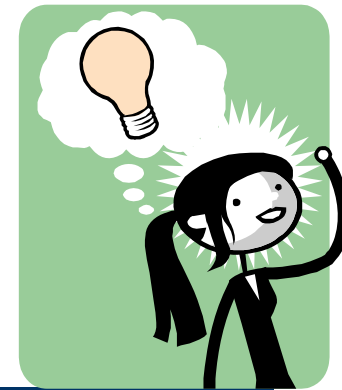
What else is E.C.R.I.N?



- E.C.R.I.N. consists of:
 - ***E.C.R.I.N. participation form*** that an individual would complete and sign
 - ***E.C.R.I.N. Excel form*** with drop down menus for ease, speed, and accuracy
 - ***Computer map display**** for ***Emergency Responders*** to immediately identify a resident needing their assistance
 - ***Participant information*** at their fingertips to guide them in resources needed to assist each individual
 - ***Paper copies of the data*** to use as an emergency backup, or to hand copies to those who will respond to an emergency

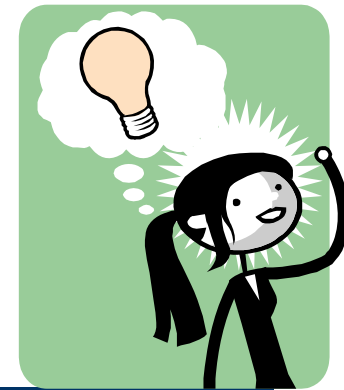
*Geographic Information System (G.I.S.)

What else is E.C.R.I.N?



- The E.C.R.I.N. tool is a package of tangible items as well as support services that will be made available to municipalities at no cost.
- In support of municipalities, E.C.R.I.N. will also:
 - Merge data from the Excel form into G.I.S., to be completed by our E.C.R.I.N. Technology Workgroup members as a service to municipalities
 - Computer training and E.C.R.I.N. training for municipalities that need this service
 - Link **Responders** to community organizations that serve individuals with special needs, a project of the E.C.R.I.N. Outreach Workgroup

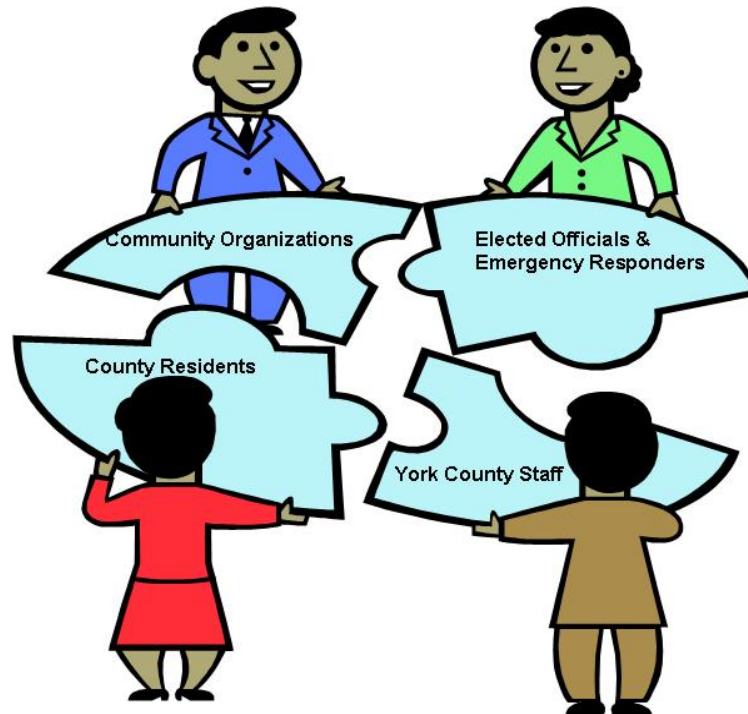
What else is E.C.R.I.N?



- E.C.R.I.N. was developed based on the K.I.S.S. principal... ***Keep It Simple, Silly!***
 - First: A simulation of receiving an Emergency Call and using E.C.R.I.N.
 - Second: Demonstration of additional of E.C.R.I.N. capabilities

E.C.R.I.N.

- Sincere thanks to the ***dedicated community volunteers*** who helped create E.C.R.I.N., and will continue on with this service



E.C.R.I.N.

- For more information on E.C.R.I.N. please contact us:

Michael Fetrow
Deputy Director
Department of Emergency
Services, Office of
Emergency Management
118 Pleasant Acres Road
York, PA 17402
mlfetrow@ycdes.org
P: 717-840-2990
F: 717-840-7406

C. Bruce Funk
Assistant Director
York County Human Services
Department
100 West Market Street
Suite 401
York, PA 17401
cbfunk@york-county.org
P: 717-771-9347
F: 717-771-4663

Kay Carman, Director

Office of Emergency Management

ECRIN

The County of York's Office of Emergency Management is excited to partner with the County's Human Services Department and other agencies on the ECRIN (Evacuating County Residents In Need) project.

Protecting the lives of County residents is our most important mission. Having a way to identify those individuals with special needs has always been a concern. We feel that this project, which uses modern technology will assist the local governing agencies better prepare to relocate residents in time of disaster.